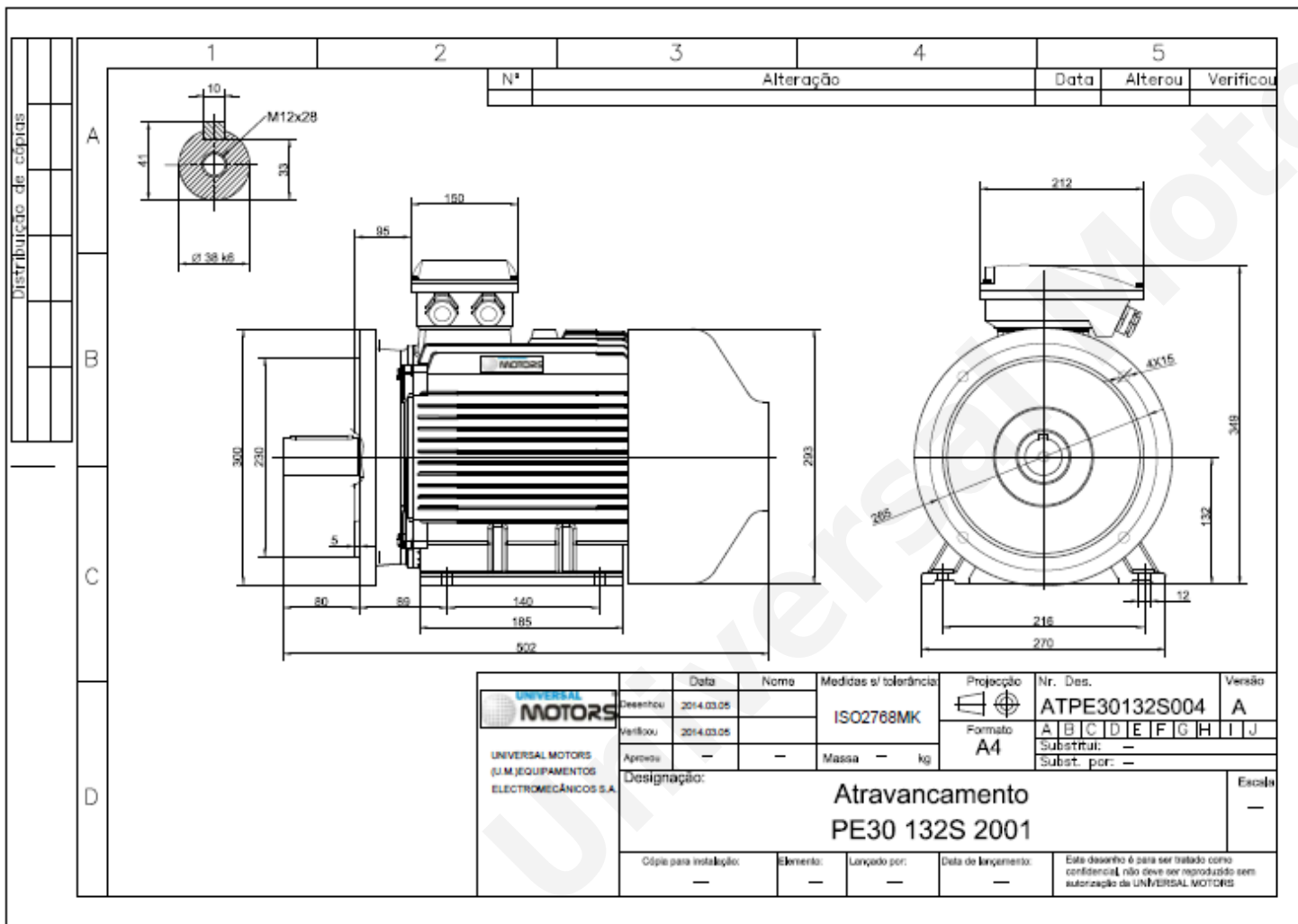


TECHNICAL DATA

Three Phase Electric Motors - Cast Iron Frame
 PE30 132S -8
 2.2 kW / 3 Cv
 710 RPM



| | |
|-----------------------------|----------------------|
| Motor type: | PE30 132S -8 |
| Output: | 2.2 kW / 3 Cv |
| Speed (min ⁻¹): | 710 RPM |
| Frequency: | 50 Hz |
| Voltage: | 400 V |
| Current: | 5.50 A |
| Power factor (Cos Ø): | 0.71 |
| Poles: | 8 |
| Insulation class: | F |
| Temperature rise Class: | B |
| Efficiency 50%: | 77.4 % |
| Efficiency 75%: | 82.2 % |
| Efficiency 100%: | 81.9 % |
| Torque: | 30 N.m |
| Tstarting/Tnominal: | 1.8 |
| Istarting/Inominal: | 6.0 |
| Tmaximum/Tnominal: | 2.0 |
| Noise: | 64 Db(A) |
| Weight: | 70.5 Kg |
| Bearing DE: | 6308 2Z C3 |
| Bearing NDE: | 6308 2Z C3 |

Regime - S1

Altitude - 1000m

Environment Temperature - 40°C

CONTACTS:

UNIVERSAL MOTORS Tel: +351 252 299 080
 Rua de São Brás,745 Fax: +351 252 299 089
 4480-782 VILA DO CONDE Mail: geral@universalmotors.pt

* References applied only in the UK